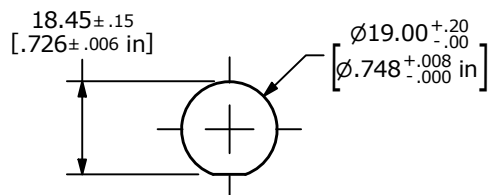
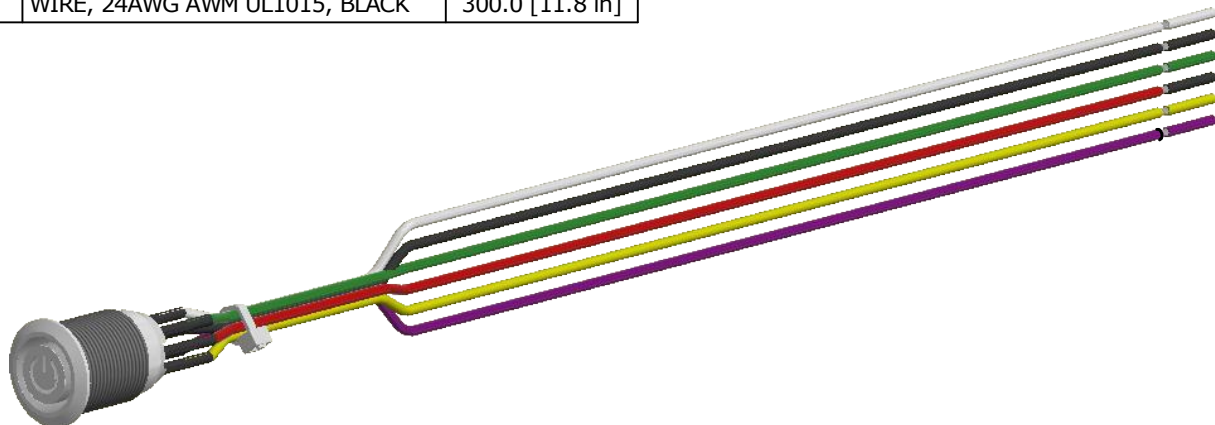
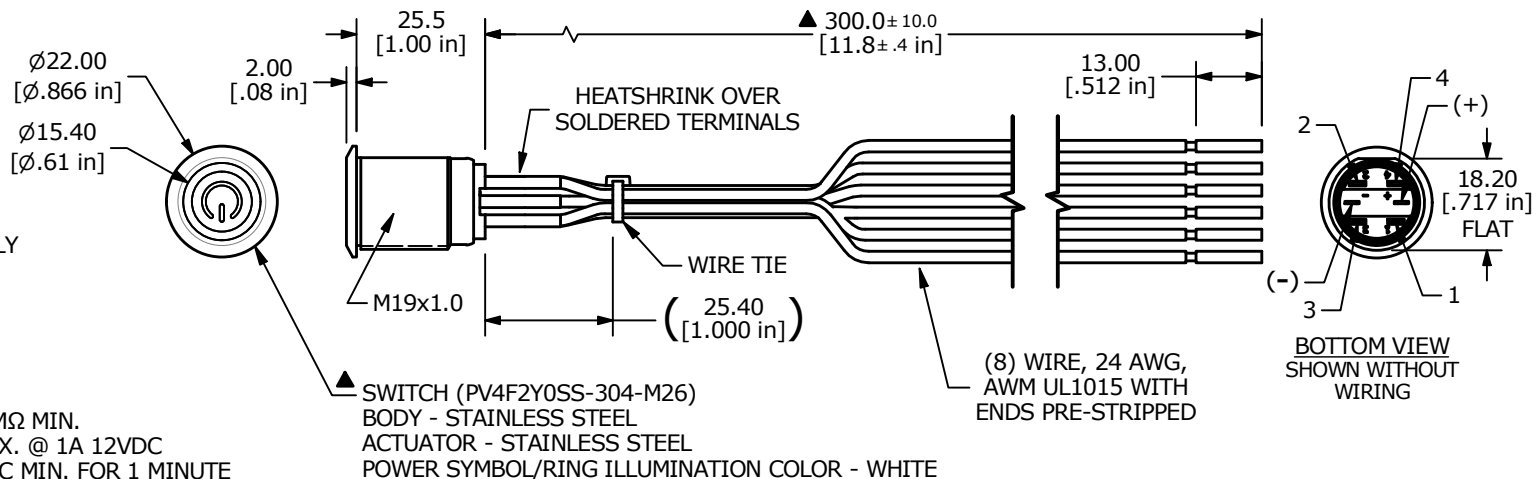


SCHEMATIC
OFF - (ON) / ON - (OFF)
SPDT ILLUMINATED
() = MOMENTARY

SWITCH	WIRE	LENGTH
SW1-1	WIRE, 24AWG AWM UL1015, GREEN	300.0 [11.8 in]
SW1-2	WIRE, 24AWG AWM UL1015, PURPLE	300.0 [11.8 in]
SW1-3	WIRE, 24AWG AWM UL1015, WHITE	300.0 [11.8 in]
SW1-4	WIRE, 24AWG AWM UL1015, YELLOW	300.0 [11.8 in]
SW1- (+)	WIRE, 24AWG AWM UL1015, RED	300.0 [11.8 in]
SW1- (-)	WIRE, 24AWG AWM UL1015, BLACK	300.0 [11.8 in]

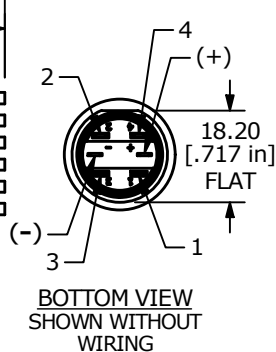


RECOMMENDED PANEL CUTOUT
MAX. PANEL THICKNESS 11.0 [.43 in]



NOTES:

1. DIMENSIONS IN MM [INCH]
2. TERMINAL NUMBERS FOR REF. ONLY
- ▲ 3. CONTACT MATERIAL: SILVER
4. RATING: 2A 24VDC
- ▲ 5. LAMP VOLTAGE: 12V
6. INGRESS PROTECTION: IP65
7. TRAVEL: 2.8mm
8. OPERATING TEMP.: -20°C to 55°C
9. INSULATION RESISTANCE: 1,000 MΩ MIN.
10. CONTACT RESISTANCE: 50mΩ MAX. @ 1A 12VDC
11. DIELECTRIC STRENGTH: 2,000 VAC MIN. FOR 1 MINUTE
12. ELECTRIC LIFE: 50,000 MAKE-AND-BREAK CYCLES AT FULL LOAD
13. ▲ DENOTES CRITICAL PARAMETER.
14. ALL MATERIAL SHALL BE ROHS COMPLIANT
- ▲ 15. SUPPLIED HARDWARE: O-RING AND HEXNUT
16. USE P/N'S DESIGNATED OR ENGINEERING APPROVED EQUIVALENTS



A	24817	RELEASE	3/29/21	JM
REV	PCR NO	DESCRIPTION	DATE	BY

TITLE PV4FWY0SS-304-M26				
SCALE	DATE	DR	DWG	REV
2:3	3/29/2021	JM	52-PV4FWY0SS304M26	A

THE INFORMATION CONTAINED IN THIS DOCUMENT IS PROPRIETARY TO E-SWITCH AND IS NOT TO BE COPIED OR TRANSFERRED